

29

Danser från Jemtland



UPPTECKNADE
och
satta
för VIOLIN
af LEO
JÖNSSON

PRIS KR.1.50

Vals.

N^o 1.

Musical score for Vals No. 1, consisting of three staves of music in 3/4 time, key of D major. The first staff begins with a dynamic marking of *mf*. The score includes first and second endings, indicated by '1.' and '2.' above the notes.

Vals.

N^o 2.

Musical score for Vals No. 2, consisting of three staves of music in 3/4 time, key of D major. The score includes first and second endings, indicated by '1.' and '2.' above the notes.

Polska.

N^o 3.

Musical score for 'Polska' No. 3, consisting of three staves of music in 2/4 time, key of D major. The first staff begins with a treble clef, a key signature of one sharp (F#), and a 2/4 time signature. The music features a series of eighth and sixteenth notes, with a repeat sign at the beginning. The second staff continues the melody with similar rhythmic patterns. The third staff concludes the piece with a final cadence and a repeat sign.

Vals.

N^o 4.

Musical score for 'Vals' No. 4, consisting of three staves of music in 2/4 time, key of D major. The first staff begins with a treble clef, a key signature of one sharp (F#), and a 2/4 time signature. The music features a series of eighth and sixteenth notes, with a repeat sign at the beginning. The second staff continues the melody with similar rhythmic patterns, including first and second endings. The third staff concludes the piece with a final cadence and a repeat sign.

Polka.

Nº 5.



Rheinländer.

Nº 6.

Musical score for Rheinländer No. 6, consisting of four staves. The key signature is two sharps (F# and C#) and the time signature is 2/4. The first staff begins with a treble clef and a key signature of two sharps. The second staff begins with a treble clef and a key signature of two sharps. The third staff begins with a treble clef and a key signature of two sharps. The fourth staff begins with a treble clef and a key signature of one sharp (F#). The score includes various rhythmic patterns, including eighth and sixteenth notes, and includes first and second endings marked with '1.' and '2.'.

Vals.

Nº 7.

Musical notation for Vals No. 7, consisting of two staves. The first staff begins with a treble clef, a key signature of one sharp (F#), and a 3/4 time signature. The melody is written in a single line with various note values and rests. The second staff continues the melody, featuring first and second endings marked with '1.' and '2.'.

Polka.

Nº 8.

Musical notation for Polka No. 8, consisting of two staves. The first staff begins with a treble clef, a key signature of one sharp (F#), and a 2/4 time signature. The melody is written in a single line. The second staff continues the melody, featuring first and second endings marked with '1.' and '2.'. Below the second staff, there are performance instructions: 'arco arco arco' above the notes and 'pizz. pizz. pizz.' below the notes, indicating alternating arco and pizzicato passages.

Vals.

Nº 9.

Musical notation for Vals No. 9, consisting of a single staff. The staff begins with a treble clef, a key signature of one sharp (F#), and a 3/4 time signature. The melody is written in a single line with various note values and rests, including accents over some notes.

Two staves of musical notation in G major, 2/4 time. The first staff begins with a treble clef, a key signature of one sharp (F#), and a 2/4 time signature. It contains a melodic line with a dynamic marking *p* (piano) and a repeat sign. The second staff continues the melody and ends with a dynamic marking *f* (forte) and a repeat sign.

Nº 10.

Schottisch.

Three staves of musical notation for a Schottisch in G major, 2/4 time. The first staff starts with a treble clef, key signature of one sharp, and 2/4 time signature. The second staff includes first and second endings. The third staff features a trill (*tr*) and a grace note (*y*).

Schottisch.

Nº 11.

Musical score for Schottisch, No. 11. The piece is in 2/4 time with a key signature of one sharp (F#). It consists of two staves. The first staff begins with a piano (*p*) dynamic marking. The second staff begins with a forte (*f*) dynamic marking. Both staves feature a melody with eighth and sixteenth notes, and include first and second endings at the end of the piece.

Nº 12.

Hambopolska.

Musical score for Hambopolska, No. 12. The piece is in 2/4 time with a key signature of one sharp (F#). It consists of two staves. The first staff begins with a piano (*p*) dynamic marking. The second staff begins with a forte (*f*) dynamic marking. The melody is primarily composed of eighth and sixteenth notes.

Nº 13.

Vals.

Musical score for Vals, No. 13. The piece is in 3/4 time with a key signature of one sharp (F#). It consists of two staves. The first staff begins with a piano (*p*) dynamic marking. The second staff begins with a forte (*f*) dynamic marking. The melody is primarily composed of quarter and eighth notes, and includes first and second endings at the end of the piece.

Three staves of musical notation in G major. The first staff contains a melodic line with trills and slurs. The second staff features a melodic line with a trill, followed by a first ending (1.) and a second ending (2.) leading to a series of chords. The third staff continues with a melodic line, a trill, and another first ending (1.) and second ending (2.) leading to a final cadence.

N^o 14.

Polska.

Three staves of musical notation for 'Polska' in B-flat major, 3/4 time. The first staff shows the beginning of the piece with a consistent rhythmic pattern. The second staff continues the melody with a repeat sign. The third staff concludes the piece with a final cadence.

Polska.

Nº 15.

Musical notation for No. 15, Polska. It consists of two staves in treble clef, key signature of two sharps (F# and C#), and 2/4 time signature. The melody is written on the upper staff, featuring a first ending (1.) and a second ending (2.). The lower staff provides a harmonic accompaniment with chords and moving lines.

Polska.

Nº 16.

Musical notation for No. 16, Polska. It consists of two staves in treble clef, key signature of two sharps (F# and C#), and 2/4 time signature. The melody is written on the upper staff, starting with a dynamic marking of *mf*. The lower staff provides a harmonic accompaniment with chords and moving lines.

Hambopolska.

Nº 17.

Musical notation for No. 17, Hambopolska. It consists of one staff in treble clef, key signature of one sharp (F#), and 2/4 time signature. The melody is written on the staff, starting with a dynamic marking of *mf*.



Nº 18.

Polka.



Vals.

Nº 19.

Musical score for Vals. Nº 19, consisting of three staves of music in treble clef, key of D major (two sharps), and 3/4 time. The first staff contains the main melody with trills and triplets. The second and third staves provide accompaniment, featuring first and second endings.

Schottisch.

Nº 20.

Musical score for Schottisch. Nº 20, consisting of three staves of music in treble clef, key of D major (two sharps), and 2/4 time. The first staff contains the main melody. The second and third staves provide accompaniment, featuring first and second endings. The piece concludes with the instruction *D. C. al* and a fermata symbol.



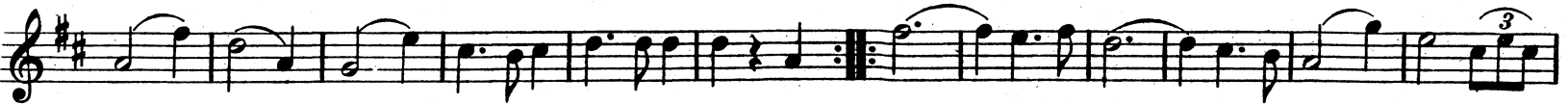
Nº 21.

Polska.



Nº 22.

Vals.



Quadrille.

N^o 23.

Polka.

N^o 24.

Schottisch.

N^o 25.

Three staves of musical notation in G major (one sharp) and 2/4 time. The first staff begins with a treble clef. The music consists of eighth and sixteenth notes, with repeat signs and first/second endings.

Polka.

Nº 26.

Two staves of musical notation for "Polka. Nº 26". The first staff starts with a treble clef, a key signature of one sharp (F#), and a 2/4 time signature. It includes a dynamic marking *mf* and a first ending. The second staff continues the piece with a second ending and includes accents (>) over several notes.

Polka.

Nº 27.

The musical score for Polka No. 27 consists of six staves of music. The key signature is two sharps (F# and C#), and the time signature is 2/4. The first staff begins with a treble clef and a key signature of two sharps. The second staff contains a first ending (1.) and a second ending (2.) with a key signature change to one sharp (F#). The third staff contains a first ending (1.) with a key signature change to one sharp (F#). The fourth staff contains a second ending (2.) with a key signature change to one sharp (F#). The fifth staff continues the melody in one sharp (F#). The sixth staff contains a first ending (1.) and a second ending (2.) with a key signature change to one sharp (F#). The score includes various musical notations such as eighth notes, sixteenth notes, and rests.

Vals.

No 28.

The musical score for "Vals. No 28" is written in 2/4 time and consists of six staves. The first staff begins with a treble clef and a key signature of one sharp (F#). The music features a variety of rhythmic patterns, including eighth and sixteenth notes, often beamed together. The second staff continues the melody with similar rhythmic motifs. The third staff introduces a bass clef, providing a harmonic foundation with sustained notes and rests. The fourth staff returns to the treble clef and includes first and second endings, marked with "1." and "2." above the staff. The fifth and sixth staves continue the melodic development, with the sixth staff also featuring first and second endings. The piece concludes with a double bar line and repeat dots.

Polka.

Nº 29.

The musical score for Polka No. 29 consists of five staves of music. The first staff begins with a treble clef, a key signature of two sharps (F# and C#), and a 2/4 time signature. The melody is written in eighth and sixteenth notes. The second staff contains a first ending (marked '1.') and a second ending (marked '2.'). The third staff also features a first ending (marked '1.') and a second ending (marked '2.'). The fourth and fifth staves continue the melody, with the fifth staff ending with a first ending (marked '1.') and a second ending (marked '2.').